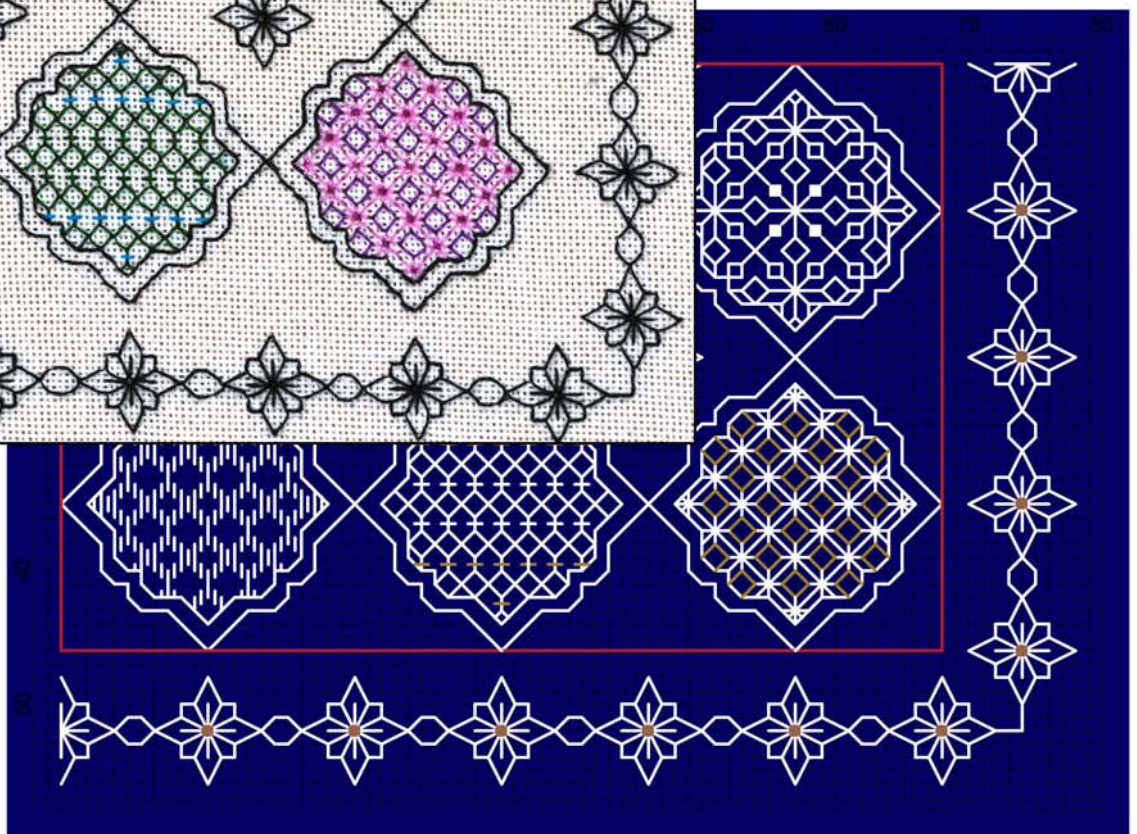
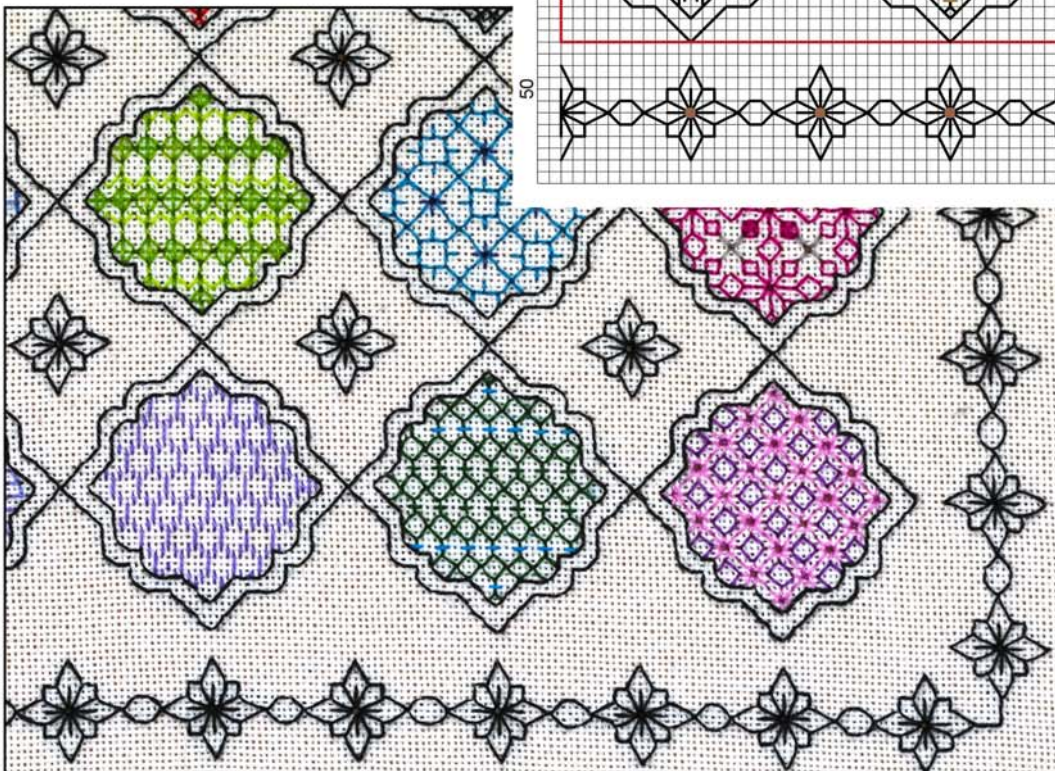
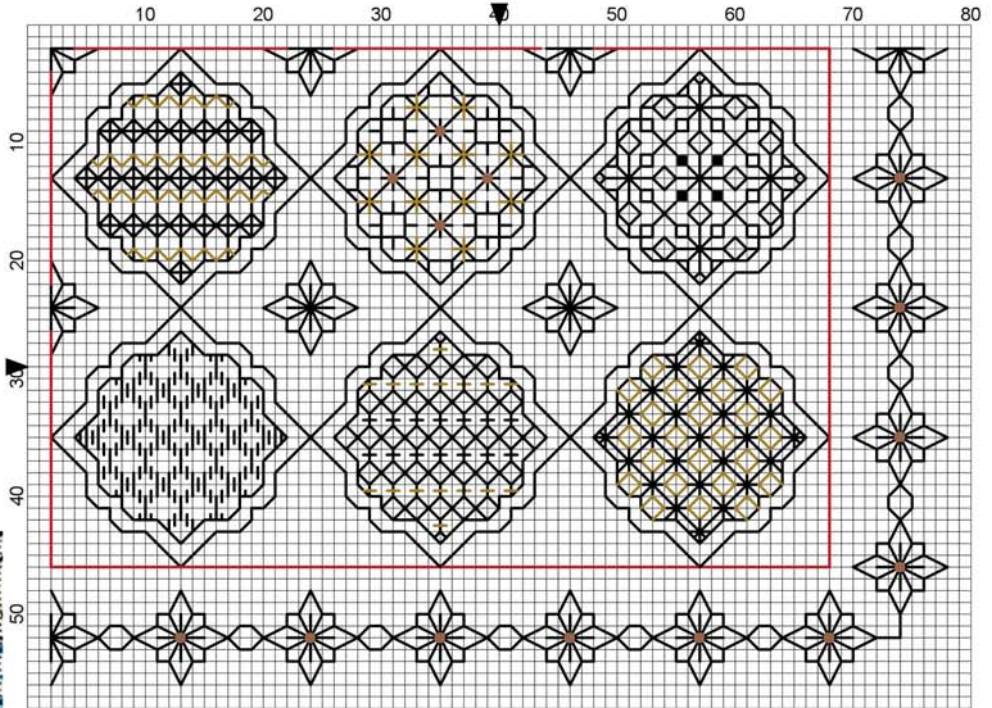


BOX OF DELIGHTS

Blackwork Journey - Designs by Elizabeth Almond

Block 6 Patterns 31 - 36



Block 6 - Patterns 31 – 36 The Final Part of 'Box of Delights'

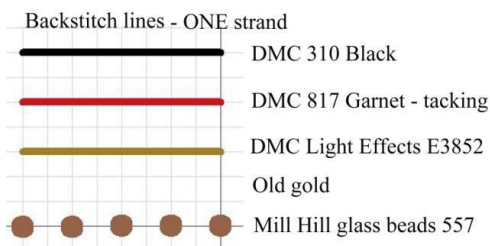
Grid Size: 80W x 58H

Design Area: 5.43" x 3.86" (76 x 54 stitches)

Three different colour schemes are included:

- Black and Gold with gold metallic thread and gold beads or copper thread and copper beads.
- Navy and white with gold metallic thread and gold beads or silver thread and silver or pearl beads.
- Coloured Delights - use scraps of thread to create each pattern in a different colour. Use variegated threads for Pattern 9.

Key:



Threads:

DMC 310 Black, one skein
817 Coral red or sewing cotton for RED tacking lines
DMC Light Effects Metallic E3852 Dark Gold, one reel
Mill Hill Glass beads 557 Gold, one packet

Block 6 Navy

DMC White, one skein

DMC Light Effects Metallic E3852 Dark Gold, one reel or E168 Silver

Mill Hill Glass beads 557 Gold, one packet or 2022 Silver

Key - Block 6 Coloured

DMC Threads – various colours as desired. Follow the picture to help in colour selection.

Tapestry needle no.24

Beading needle

Small ring or frame if required.

Stitches used:

Back stitch – worked in one strand of thread over two threads of fabric unless otherwise indicated on the chart

Cross stitch - worked in two strands of thread, over two threads.

Colonial knots - worked in **two strands**

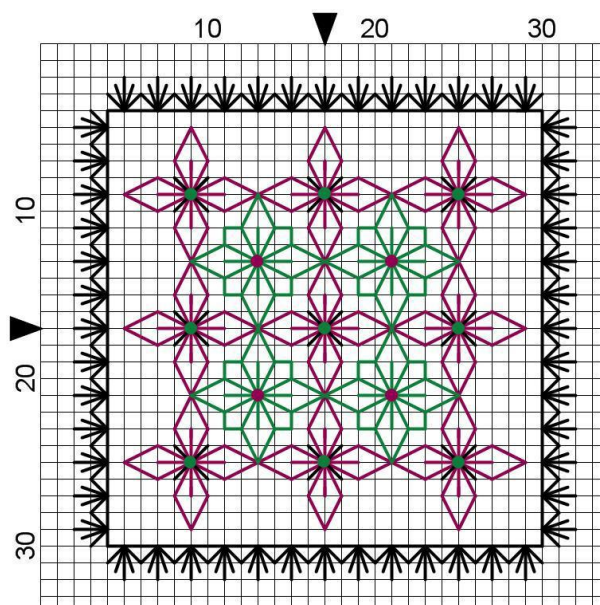
(See 'Introduction' for stitches (Page 9))

Method:

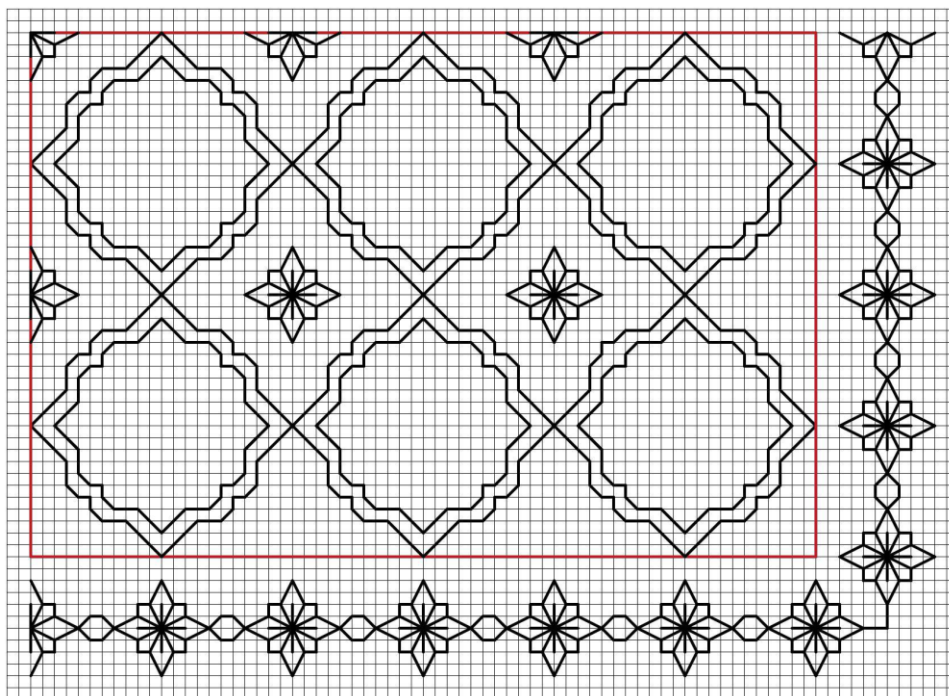
1. Follow on from Block 5 placing the next six patterns in the correct position on the chart. For ease of working there are SIX blocks of six designs. To help line the blocks up a tacking line in RED surrounds the six blocks. This is optional but will help to align the blocks correctly.

2. The outline for each sweet is worked in backstitch Black 310 or white as appropriate to the colour scheme. The filler or 'diaper' patterns are added once the outline has been completed using the colour scheme chosen (see charts and jpg)

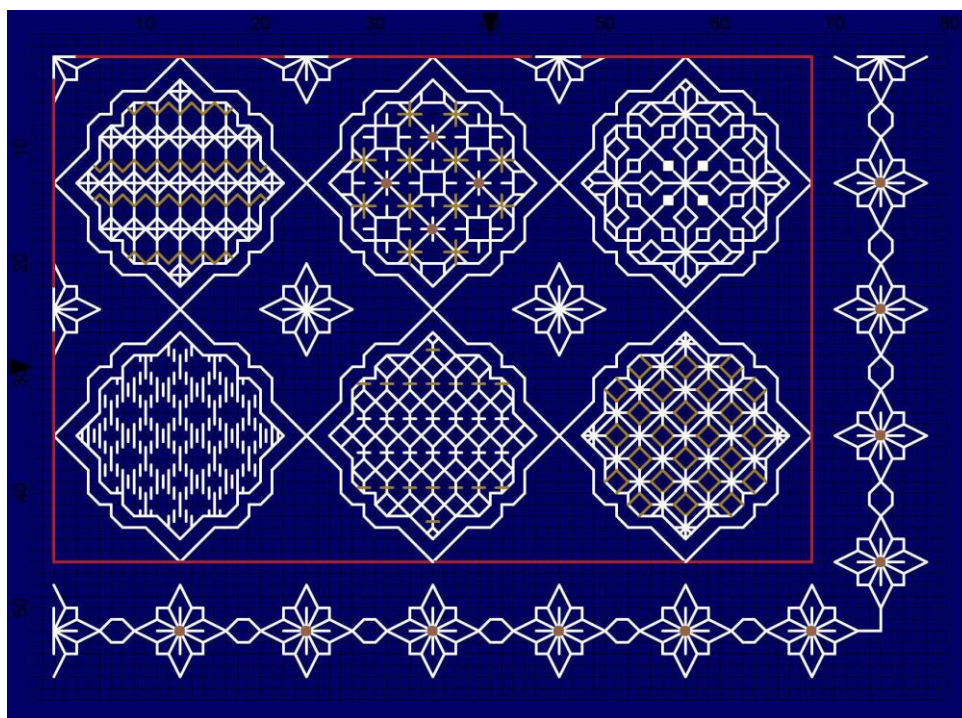
Even small motifs can be joined together to make a design.



Block 6
Bottom right hand side



The framework is the same for all variations



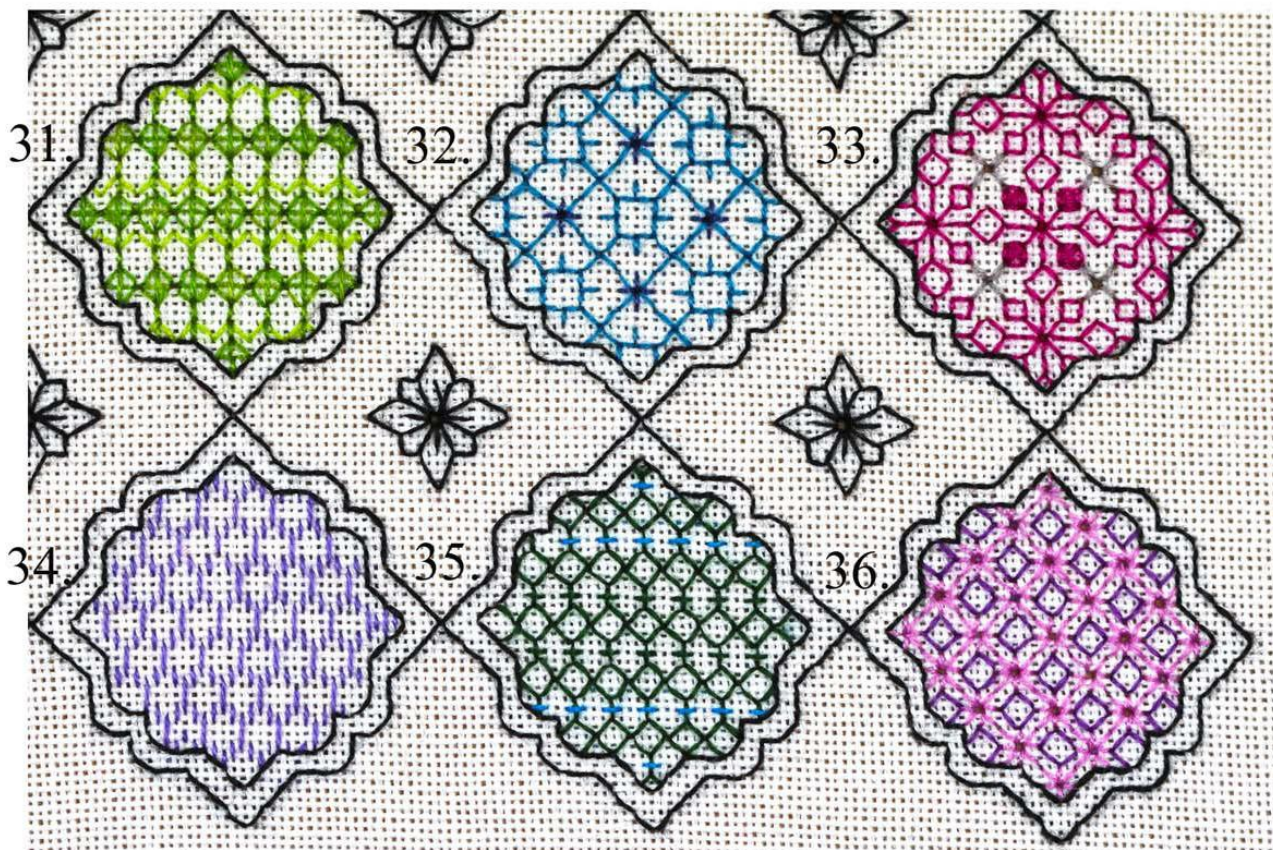
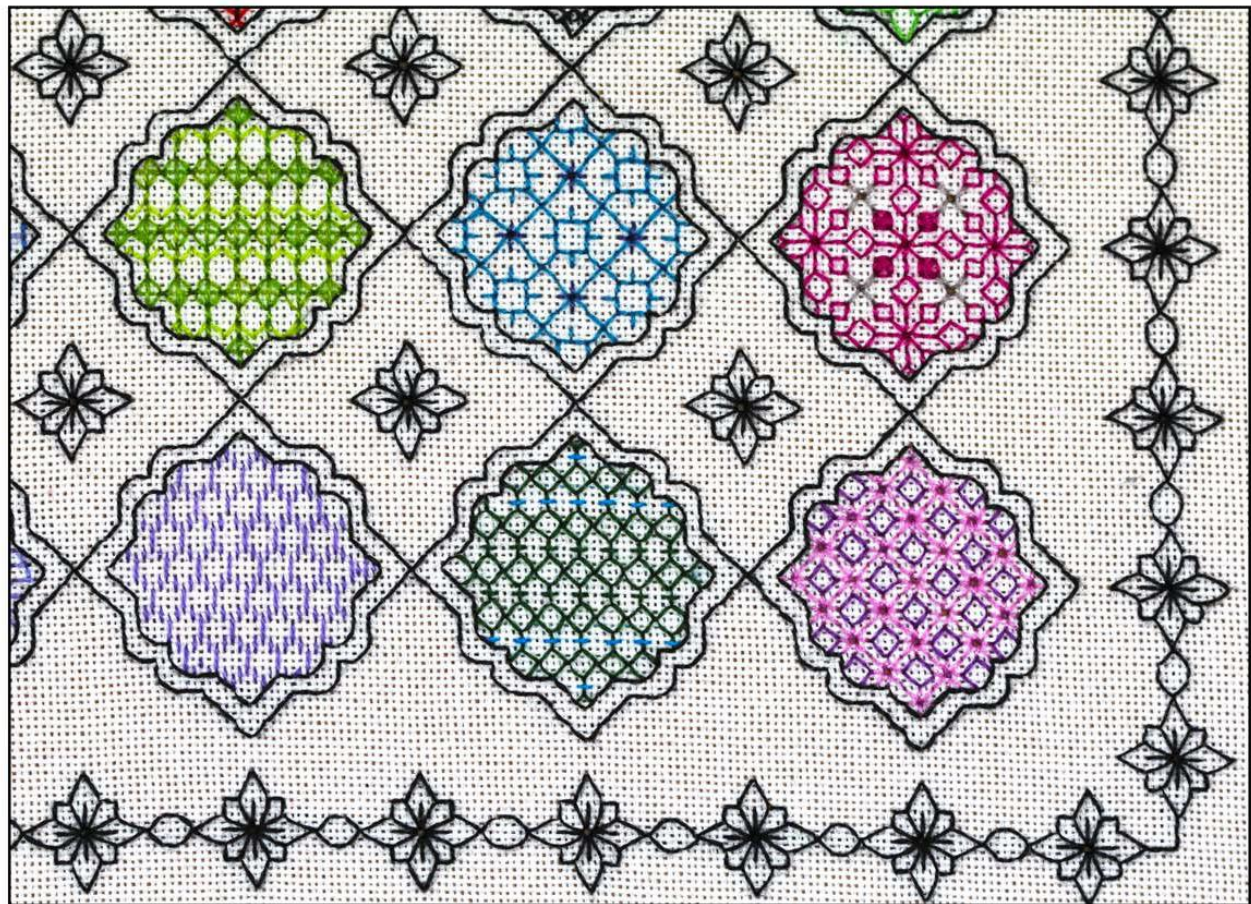
Block 6 Navy

The gold metallic threads can be replaced by DMC E168 Silver and Mill Hill glass beads 2022 Silver in place of the gold beads.

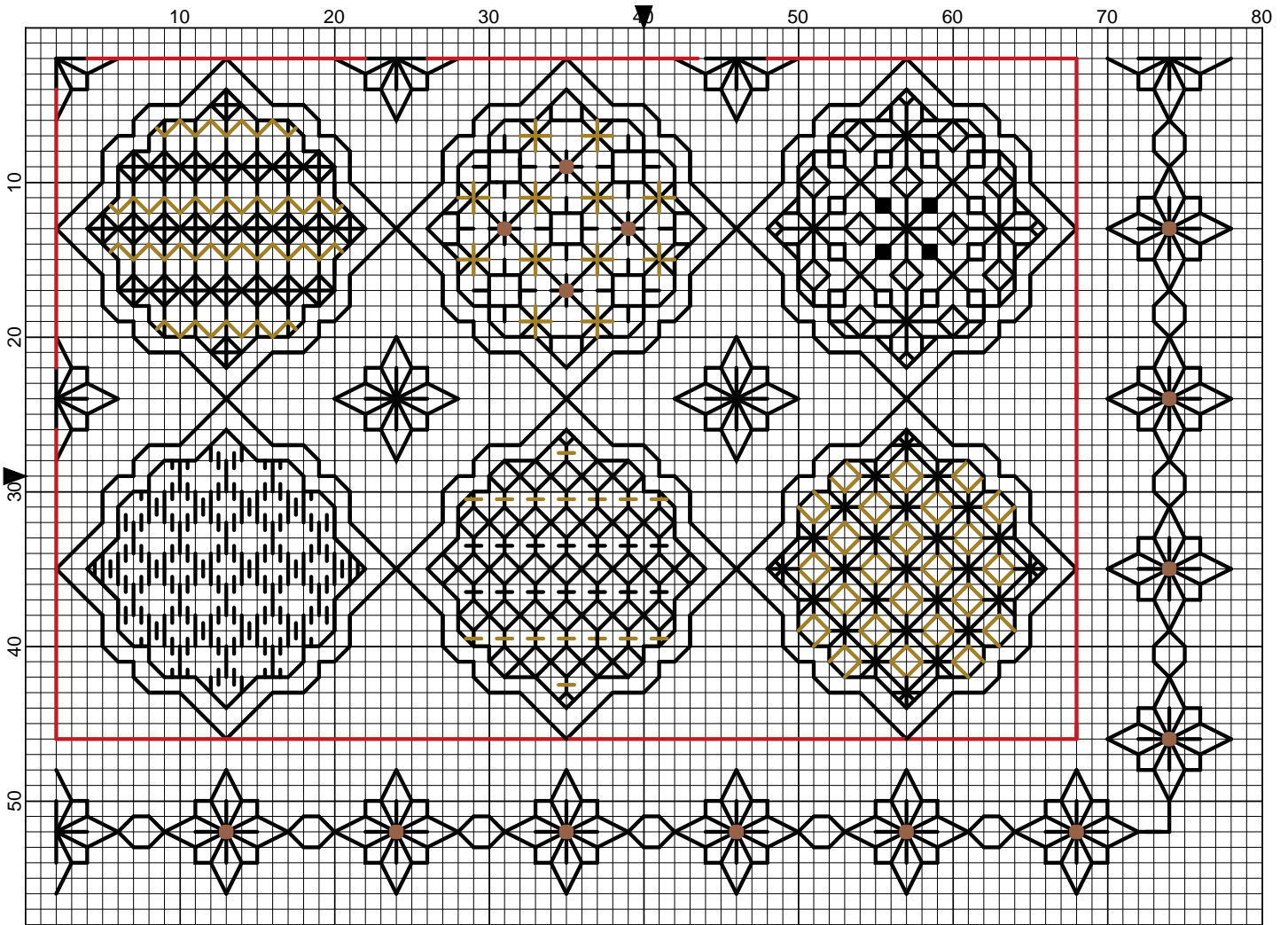
Use the chart for Block 6 Black and Gold when working this version.

This design is also suitable for black, emerald green or red fabric.

Block 6 Patterns 31 – 36

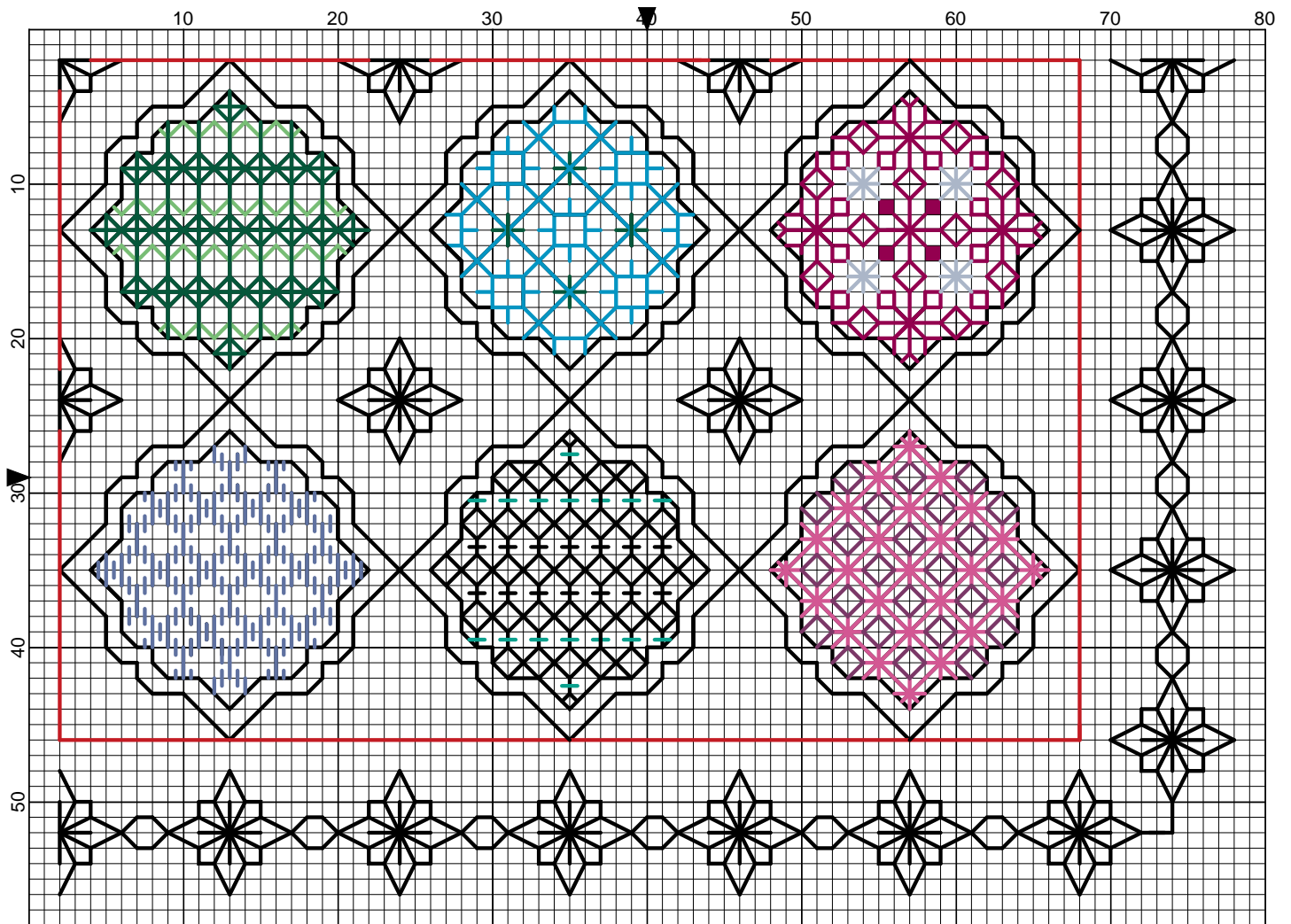


Block 6 Black and Gold Patterns 31 - 36

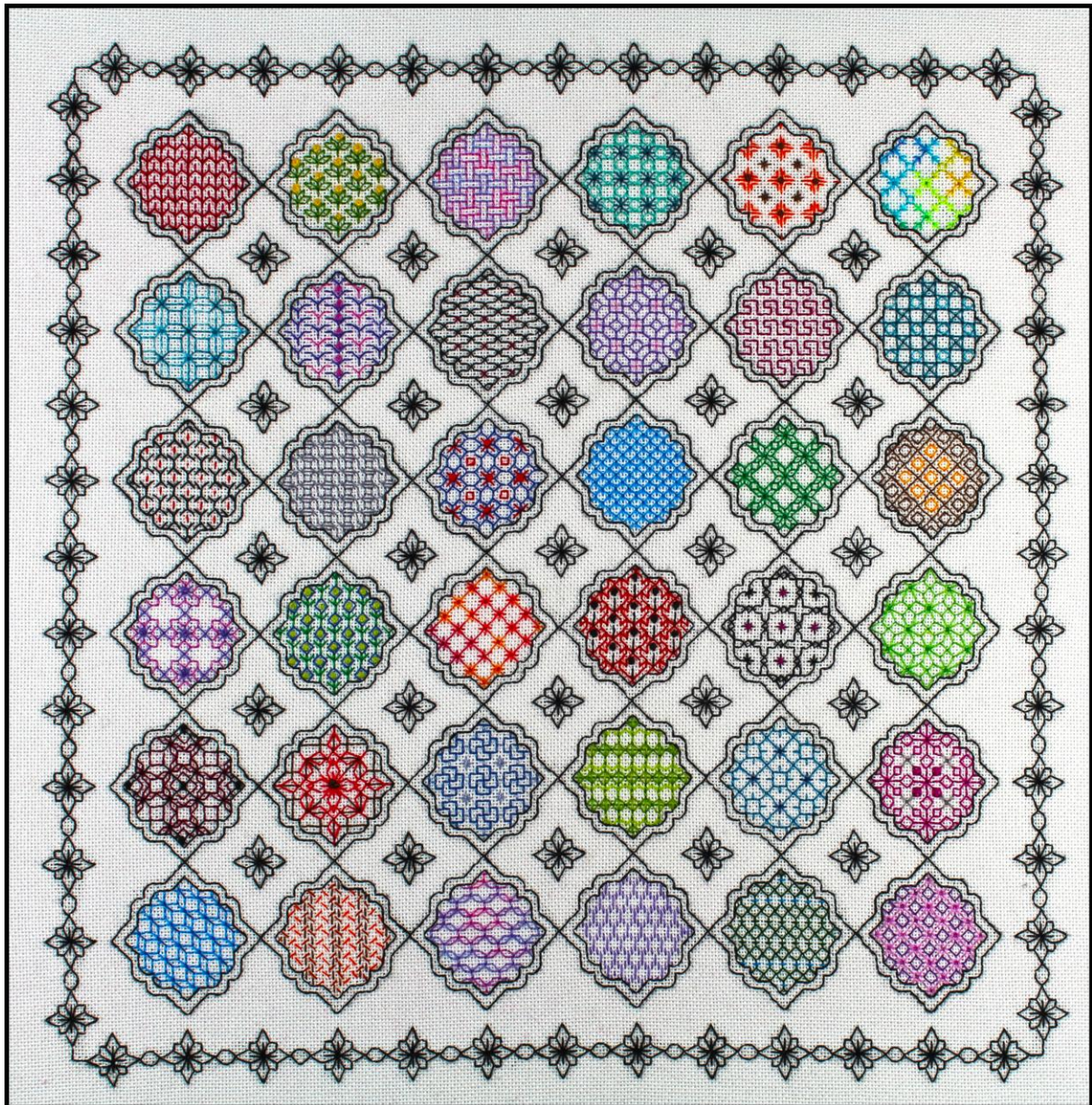


Elizabeth Almond

Block 6 Colour Patterns 31 - 36



Elizabeth Almond



I hope you have enjoyed working through 'Box of Delights' as much as I have enjoyed creating it

If you want to explore this project further EB0004 'Box of Delights' extended is available from Blackwork Journey

If you have any queries please contact:
lizalmond@blackworkjourney.co.uk

Happy Stitching,

Liz

